



Bathroom & Wet Area Installation Guide

Tools Required

Safety Glasses & Earmuffs
Hammer or Rivet Gun
Wall Board Nails or Sealed Pop Rivets
Wet Area Silicon—1 tube per panel
Tin Snips—straight and curved
Stanley knife with used blade
Angle Grinder with aluminium cutting disc
Metal Hole Saw or Drill and Tin Snips for cutting out tap holes
Soft cloth
Silicone to match panel colour or a clear if in doubt

ALWAYS CONSULT YOUR COUNCIL & RELEVANT LICENCED TRADESPEOPLE PRIOR TO INSTALLING PRESSED TIN PANELS® PRODUCTS. CAUTION SHOULD BE USED AT ALL TIMES AS METAL EDGES ARE VERY SHARP.

All wet areas need to be prepared as per Australian wet area standards. Pressed Tin Panels® will not be held responsible for incorrect installation or incorrect waterproofing of any area.

Powder Coating prior to installation is recommended for all Pressed Tin Panels® pressed metal products being used in any wet area. This ensures a sealed, easily cleaned surface.

Panel Coating Information:

<https://pressedtinpanels.com/wp-content/uploads/2018/10/Panel-Coating-Information.pdf>

NOTE: All panels need to be fitted and cut to appropriate size prior to installation. This also includes the cutting of tap holes etc.

Watch the full installation video:

<https://www.youtube.com/watch?v=pHa9a2s8o0M&t=14s>

We recommend: Fold panels into corners—this ensures a watertight seal. Overlap top panels OVER the bottom ones to aid waterproofing. Silicon seal joins as you go, along with the rivets and Tap holes.

Cleaning: To retain the finish on your Powder Coated wet area, do not use any abrasive cleaners or scourers. The best option is spray on shower cleaner together with some water and a Micro-fibre cloth. Simply clean the area regularly and it will look great for years to come.

STICKER INFO: Stickers on back of the sheets are a guide showing which direction they have been run through the press. These stickers are to be used as a guide during installing. When erecting large areas they should all run in one direction if possible.

Installation

1. Ensure the entire area has been professionally sealed with a waterproofing membrane and is free from any loose debris and dust.
2. Panels need to be semi-fitted, cut and folded to appropriate sizes prior to installation. Folding panels into corners is paramount for a watertight finish, this can be achieved in a sheet metal folder or onsite with a scribe and straight edge with manual manipulation to achieve the fold. Work around the shower area, marking and cutting panels as you go; remember to overlap joins correctly when marking. Once you are happy with the layout of your pieces you are ready to commence installation. We recommend lapping top panels over the bottom panels.
3. **To fold a panel:** Measure and mark then on reverse side, 'score' with a used Stanley knife and over a straight edge like a tabletop, manually push panel down along the scored line until the desired fold has been achieved. **To Cut Tap holes:** Mark and cut out holes for power outlets using the hole saw and drill, you may need to fine tune the hole with tin snips as well. Measure precisely and check the panel in position prior to cutting the holes or applying adhesive.

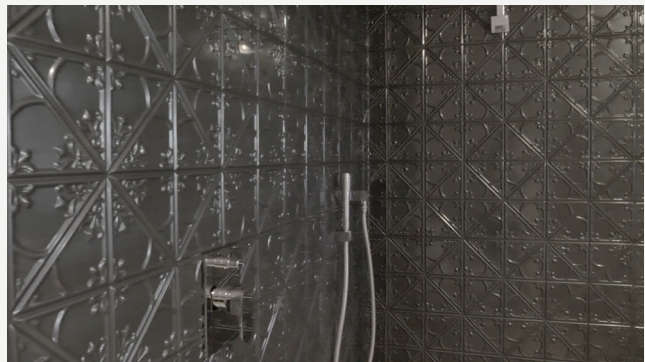




Bathroom & Wet Area Installation Guide (cont.)

4. When you are ready to install your first panel apply a good quality Wet Area Silicone all over the back of the panel, place against wall in desired position, pushing and rubbing over entire panel area with the soft cloth to ensure tight adhesion.
5. Continue in the same direction with your next panel, (refer to STICKER INFO) running a continuous bead of silicon on the back of the panel approx. 25mm in from the edges of the panel, overlapping joints as you go along and down the walls. Keep in mind which way you want to have your overlaps running i.e. away from the eye and top panels overlapping the bottom ones for waterproofing. Joints will require a Sealed Pop Rivet to secure in place, these can then be touched up to match powder coat colour at a later stage.
6. A Tile Edge or Pressed Metal Border can be used around exposed edges to create a more finished edge if desired. Be sure to install these as the panels are being installed as you will need to slip one edge under the panel. Pop rivet panels and edging into place as required.
7. To finish, run a bead of silicone along the bottom edge where the panels meet the floor, either choose the same colour as your panel or, if in doubt go for a clear silicone. Touch up any rivets with the touch up paint, this along with some general housekeeping and you are done!

We do not recommend mixing our products with other pressed metal products on the market. There are variances in the sizing of each product which will make pattern matching difficult. Surface scratches may be present, painting recommended. If you have any questions, please feel free to contact the store of purchase or Pressed Tin Panels® directly.



Once your project is completed we would love to see how you have transformed your space, please send photos through to photos@pressedtinpanels.com