



Ceiling Installation Guide



Notes & Tips

Painting is suggested for ceiling areas.

If using our cornices, these must be installed before ceiling panels.

Having a second person assist with a ceiling installation makes the job easier however, ceiling props can be purchased from your local hardware store.

BEFORE STARTING INSTALL (DRY RUN): Always measure a ceiling area prior to beginning installation to ensure the room is square. This will help you determine where to start the install and which pieces to cut. Typically, we suggest starting in the centre of the ceiling and working your way to the edges.

Lay all panels out and determine order of each piece. This step is also referred to as a '**dry run**'.

STICKER INFO: Stickers are on the back of the products, where possible have all the panels running in the same way i.e: Stickers are generally in the bottom right hand side when installing.

CUTTING PANELS: To cut panels, measure height & length of space TWICE. Measure panels & mark using small piece of tape and marker. Connect both 'marks' by running a longer piece of tape across. To ensure a straight, even cut, measure the entire section of the tape. Using your choice of angle grinder or straight edge tin snips, cut along the edge of the tape.

TIP- Use a small candle or beeswax to lubricate alloy cutting disc (when using an angle grinder). Complete a rotation into candle, on the grinder with the disc installed. This reduces burning & burring on metal.

TIP- Measure twice, cut once.

PAINTING RAW ALUMINIUM: All our aluminium products are chemically etched (treated with a non-chromate treatment) during manufacturing process. They are ready to paint and don't require a 'Metal Etch Primer', a '3 in 1' primer is sufficient

Paint & primer must be compatible e.g. both water or oil based. Panels can be sprayed, brushed or rolled to achieve the desired coverage. Always consult a paint expert if in doubt.

CLEANING:

For Powder Coated panels, abrasive cleaning products or scourers are NOT to be used. A spray & wipe or warm soapy water works best. For an 'extra' shine, finish with a micro-fibre cloth.

For Raw Aluminium panels, use methylated spirits and paper towel prior to clear coating to remove any finger prints & dirt. After coating, warm soapy water and a cloth works best.

Tools Required

- Safety Glasses & Earmuffs
- Tape Measure, Marker & Masking Tape
- Hammer or Rivet Gun
- Wall Board Nails or Sealed Pop Rivets (Aluminium, 12-14mm approx)
- Silicone or Polyurethane Adhesive (Good Quality)
- Tin Snips—straight and curved
- Angle Grinder with aluminium cutting disc
- Metal Hole Saw or Drill and Tin Snips for cutting out power outlet holes
- Ceiling Props

ALWAYS CONSULT YOUR COUNCIL & RELEVANT TRADESPEOPLE PRIOR TO INSTALLING PRESSED TIN PANELS® PRODUCTS. CAUTION SHOULD BE USED AT ALL TIMES AS METAL EDGES ARE VERY SHARP.

Installation

1. Have an Electrician disconnect power points. Ensure the substrate is flat by cleaning from any loose debris and dust surface.
2. Complete a 'Dry Run' (refer to Notes). All joins must overlap to ensure the continuous pattern repeat.
3. Mark and cut power point & light/fan holes using a Metal Hole Saw.
4. Re-complete a 'Dry Run' to ensure all panels have been measured & cut correctly. Decide order your panels are being installed.



Above Example: Ceiling with cornice installed first



Above Example: One panel installed with ceiling prop holding in place



Ceiling Installation Guide (cont.)



- 5. Prepare Adhesive tubes and have the Hammer and Nails OR the Pop Rivet Gun and Rivets ready.

Cover the back of the panel with adhesive and place the panel on the ceiling into position. Use a ceiling prop or extra set of hands to hold in place while pop riveting.

TIP- Leave adhesive 25mm approx from edge of panels to avoid spillage. Rub over with soft cloth to ensure a bond between the glue, panel and substrate.

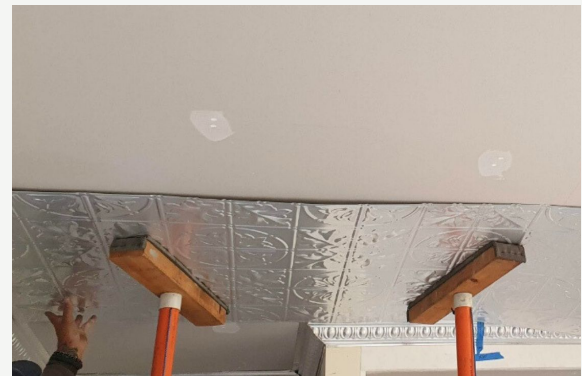
- 6. Repeat step 5 for each panel. To ensure the adhesive bonds, rub the panels over with a soft cloth and use a pop rivet or nail along the overlaps or sections where adhesive isn't holding. Ceiling installations usually require more rivets or nails compared to other areas.

TIP- Place pop rivets or nails within the pattern opposed to any flat sections.

- 7. Once installed, paint panels as per 'Panel Coating Information' or touch up pop rivets using 'touch up paint' purchased with panels.



Above example: Using multiple ceiling props to assist while pop riveting



Above example: Ceiling props assisting



Above example: Installed ceiling prior to painting



Completed ceiling featuring 'Large Maple' design

Disclaimers

Pressed Tin Panels® holds no responsibility for installation including layout or use of our product. Final choices of sealants, paints, adhesives and powder coating is entirely installers/ clients choice.

It is the clients responsibility to check panels thoroughly once received. If you believe there is a fault with our product, our office must be contacted immediately (see 'Contact' for email). This **MUST** be done prior to installation to prevent voiding warranty.

All instructions are given as a guide only. We do not recommend mixing our products with other pressed metal products on the market.

Any cutting completed by Pressed Tin Panels® is completed with a 2mm allowance. This may result in some manual cutting to be completed on site.

Power point and tap holes are all completed on site.

Once your project is completed we would love to see your transformed space. Please send photos through to photos@pressedtinpanels.com or our social pages.

CONTACT OUR OFFICE

Email:
sales@pressedtinpanels.com

Phone:
(02) 6332 1738

Website:
pressedtinpanels.com OR scan [QR](#).



Scan QR Code for all installation guides & videos.