



Feature Wall Installation Guide



Notes & Tips

If installing a powder coated feature wall, paint a small strip of the same colour around the perimeter of the wall first. This will ensure the edge of the panels blend seamlessly into the wall.

BEFORE STARTING INSTALL (DRY RUN): Lay all panels out and determine placement of each piece. Measure the area and cut panels where needed. This step is also referred to as a 'dry run'.

STICKER INFO: Stickers are on the back of the products, where possible have all the panels running in the same way ie: Stickers are generally in the bottom right hand side when installing.

FOLDING PANELS: Measure & mark required fold on back of sheet. 'Score' gently with a used Stanley knife along the whole section. Place panel over a straight edge like a tabletop and manually push panel down along the scored line until desired fold has been achieved.

TIP- Heating the panels in the sun or with a heat gun/ hair dryer can help powder coat become more malleable, resulting in easier fold & cut.

CUTTING PANELS: To cut panels, measure height & length of space TWICE. Measure panels & mark using small piece of tape and marker. Connect both 'marks' by running a longer piece of tape across. To ensure a straight, even cut, measure the entire section of the tape. Using your choice of angle grinder or straight edge tin snips, cut along the edge of the tape.

TIP- Use a small candle or beeswax to lubricate alloy cutting disc (when using an angle grinder). Complete a rotation into candle, on the grinder with the disc installed. This reduces burning & burring on metal.

TIP- Measure twice, cut once.

PAINTING RAW ALUMINIUM: All our aluminium products are chemically etched (treated with a non-chromate treatment) during manufacturing process. They are ready to paint and don't require a 'Metal Etch Primer', a '3 in 1' primer is sufficient

Paint & primer must be compatible e.g. both water or oil based. Panels can be sprayed, brushed or rolled to achieve the desired coverage. Always consult a paint expert if in doubt.

Clear coating raw aluminium is recommended to avoid fats, liquids & oils absorbing into the raw metal. We suggest 'Dulux Metal Shield Brass & Copper Clear' which can also be used on aluminium & can be purchased from a paint specialist.

CLEANING: For Powder Coated panels, abrasive cleaning products or scourers are NOT to be used. A spray & wipe or warm soapy water works best. For an 'extra' shine, finish with a micro-fibre cloth.

For Raw Aluminium panels, use methylated spirits and paper towel prior to clear coating to remove any finger prints & dirt. After coating, warm soapy water and a cloth works best.

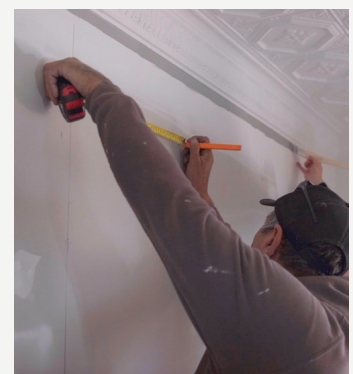
Tools Required

- Safety Glasses & Earmuffs
- Tape Measure, Marker & Masking Tape
- Hammer or Rivet Gun
- Wall Board Nails or Sealed Pop Rivets (Aluminium, 12-14mm approx)
- Silicone or Polyurethane Adhesive (Good Quality)
- Tin Snips—straight and curved
- Angle Grinder with aluminium cutting disc
- Metal Hole Saw or Drill and Tin Snips for cutting out power outlet holes
- Soft cloth

ALWAYS CONSULT YOUR COUNCIL & RELEVANT TRADESPEOPLE PRIOR TO INSTALLING PRESSED TIN PANELS® PRODUCTS. CAUTION SHOULD BE USED AT ALL TIMES AS METAL EDGES ARE VERY SHARP.

Installation

1. Have an Electrician disconnect power points. Ensure the substrate is flat by cleaning from any loose debris and dust surface.
2. Complete a 'Dry Run' (refer to Notes). All joints must overlap to ensure the continuous pattern repeat. Panels are designed to be folded in corners.
3. Mark and cut power point holes using a Metal Hole Saw. Do the same with your panels, using tin snips or an angle grinder to cut.
4. Re-complete a 'Dry Run' to ensure all panels have been measured & cut or folded correctly. Decide order your panels are being installed.



Painting a strip along the perimeter Measure twice, cut once



Feature Wall Installation Guide (cont.)



5. Prepare Adhesive tubes and have the Hammer and Nails OR the Pop Rivet Gun and Rivets ready.
Cover the back of the panel with adhesive and place the panel on the wall into position. Leave adhesive 25mm approx from edge of panels to avoid spillage. Rub over with soft cloth to ensure a bond between the glue, panel and wall.
6. Repeat step 5 for each panel. To ensure the adhesive bonds, rub the panels over with a soft cloth. Use a pop rivet or nail along the overlaps or sections where adhesive isn't holding.
TIP- Place pop rivets or nails within the pattern opposed to any flat sections.
7. Install chosen edging by sliding it behind the panel in required spot. Secure with a pop rivet or nail. A mitre finish is required for corner sections.
8. Once installed, paint panels as per 'Panel Coating Information' or touch up pop rivets using 'touch up paint' purchased with panels.



Above example: Installing panels



Above example: Pop riveting into place

Disclaimers

Pressed Tin Panels® holds no responsibility for installation including layout or use of our product. Final choices of sealants, paints, adhesives and powder coating is entirely installers/ clients choice.

It is the clients responsibility to check panels thoroughly once received. If you believe there is a fault with our product, our office must be contacted immediately (see 'Contact' for email). This **MUST** be done prior to installation to prevent voiding warranty.

All instructions are given as a guide only. We do not recommend mixing our products with other pressed metal products on the market.

Any cutting completed by Pressed Tin Panels® is completed with a 2mm allowance. This may result in some manual cutting to be completed on site.

Power point and tap holes are all completed on site.

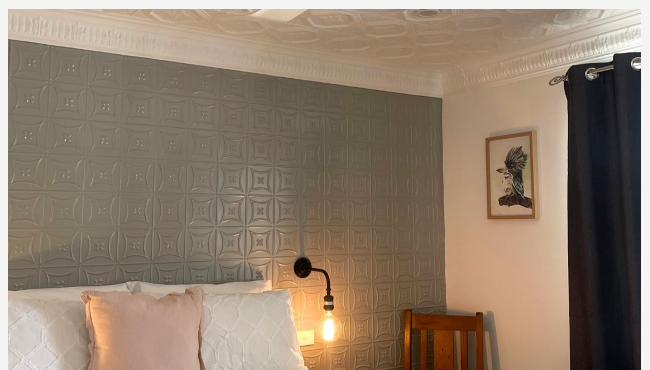
Once your project is completed we would love to see your transformed space. Please send photos through to photos@pressedtinpanels.com or our social pages.

CONTACT OUR OFFICE

Email:
sales@pressedtinpanels.com

Phone:
(02) 6332 1738

Website:
pressedtinpanels.com OR scan [QR CODE](#).



Completed area featuring 'Carnivalé' design, Powder Coated



Scan QR Code for all installation guides & videos.